

Developing Pathways and Partnerships to Prevent Homelessness

Jo Beck

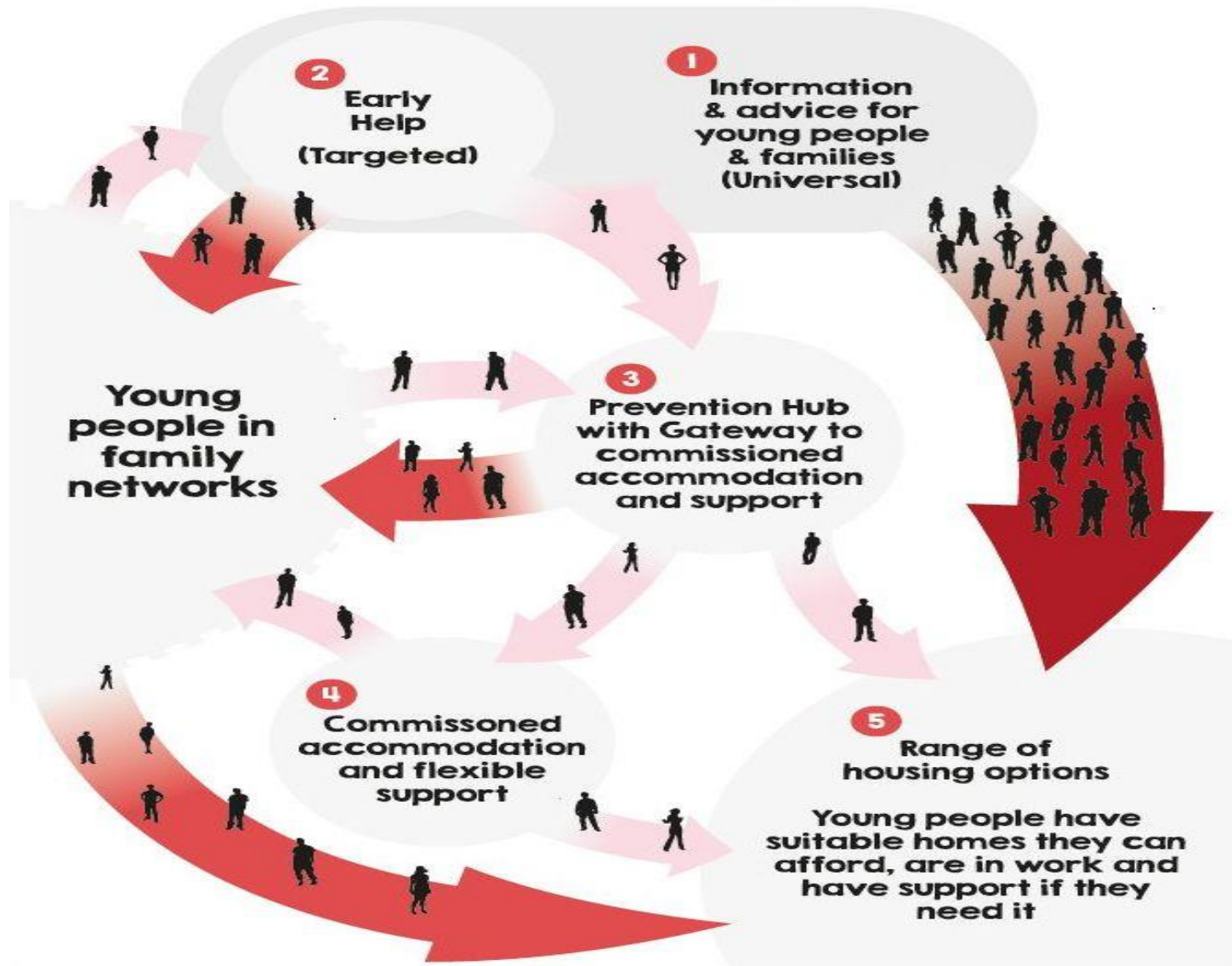
Youth Homelessness Adviser

31st March 2017

PREVENTING YOUTH HOMELESSNESS

**St
Basils**
Works with young people

Positive Pathway Model



PREVENTING YOUTH HOMELESSNESS

Authorities that have a Positive Pathway - or key elements of it say*:

- ✓ It leads to significant improvements to strategic and collaborative approaches to youth homelessness (80% reported this)
- ✓ Has a significant impact on youth homelessness prevention and makes improvements to housing pathways
- ✓ It's a catalyst for better collaborative working between housing authorities and children's social care
- ✓ It impacts on prevention success rates – 85% is the approx. success rate for those with a 'youth hub' model
- ✓ But also helped with suitable emergency and supported housing options

BUT still key challenges – most usually - housing options/supply, complex/multiple needs

*Taken from Sheffield Hallam evaluation of the Pathway in 2016/17

Pathway elements

Universal prevention: timely support for all about housing and financial issues

Targeted prevention: better identification of those at risk and providing early interventions

Crisis relief: effective interventions and advice to resolve a crisis

Recovery: accommodation and support targeted at helping people exit homelessness rapidly

Move-on support: longer term support to sustain independent living

ALL require partners to be involved - Housing Options Teams will not prevent homelessness working alone...

The Homelessness Reduction Act



- **Shifts focus** and resources into prevention rather than reaction to homelessness
- New duties to provide **advice services** particularly to those at highest risk
- New duties to **prevent and relieve** homelessness, including for “non-priority” applicants
- Everybody has an **assessment and a housing plan** – an end to “gatekeeping”
- Public bodies have **duty to refer** anybody at risk of homelessness to the LA – hospitals, schools, criminal justice agencies..

Developing Positive Pathways

- **Engage your partners** (at senior level)– there will be a ‘duty to refer’ under Homeless Reduction Act
- **Raise awareness** – Reality of housing options, the ‘homelessness route’ is not the best or only way, the advantages of planning rather than crisis. Promote early contact and welcome requests for advice
- **Targeted interventions** – identify the causes and the points at which intervention will make a difference
- **Joint protocols and procedures**- useful for establishing commitment, addressing staff turnover, keeping on track
- **Develop accommodation options** - review supported housing model – who is it for, does it meet greatest needs and avoid use of TA? Do you need a ‘Housing First’ option? Flexible Homelessness Support Grant could fund some alternatives



Youth Justice Accommodation Pathway...coming soon

Youth Justice Pathway includes

- Early Help
- Community Safety & Prevention
- Safeguarding and Gang Exit
- Sentence and Resettlement Planning from beginning to end of custody and through the gates – what is required at each stage, and by who
- Supported housing and move on options
- Effective resettlement support

Partners to be involved

Children's and Youth Services
YOS
CAMHS
Health providers
Substance Misuse Services
Prison
Probation
Community Rehabilitation
Companies and sub-contractors
Supported Housing Providers
Charitable and Third Sector housing and support agencies
RPs
and...
Housing departments

What is required?

- **Leadership** - transforming how you do things and bringing others to the table
- **Partnership partnership partnership** = trust, honesty & understanding of each others pressures
- Clear and **shared strategy with outcomes and measures**
- **Good data to support investment**-we know homeless prevention contributes to other priorities – reducing reoffending, improving mental health, reducing worklessness – but can you demonstrate it?
- **One step beyond** new thinking and new models – Trailblazer opportunities to try something different
- **Using your local housing market** - e.g.options to deliver shared housing for under 25s, re-cycling properties when services decommissioned
- **Learning from others** success is most definitely possible